

BUILDING THE CULTURE OF INTERNATIONAL COLLABORATION AND RESEARCH



HOBART AND
WILLIAM SMITH
COLLEGES

ETIN ANWAR

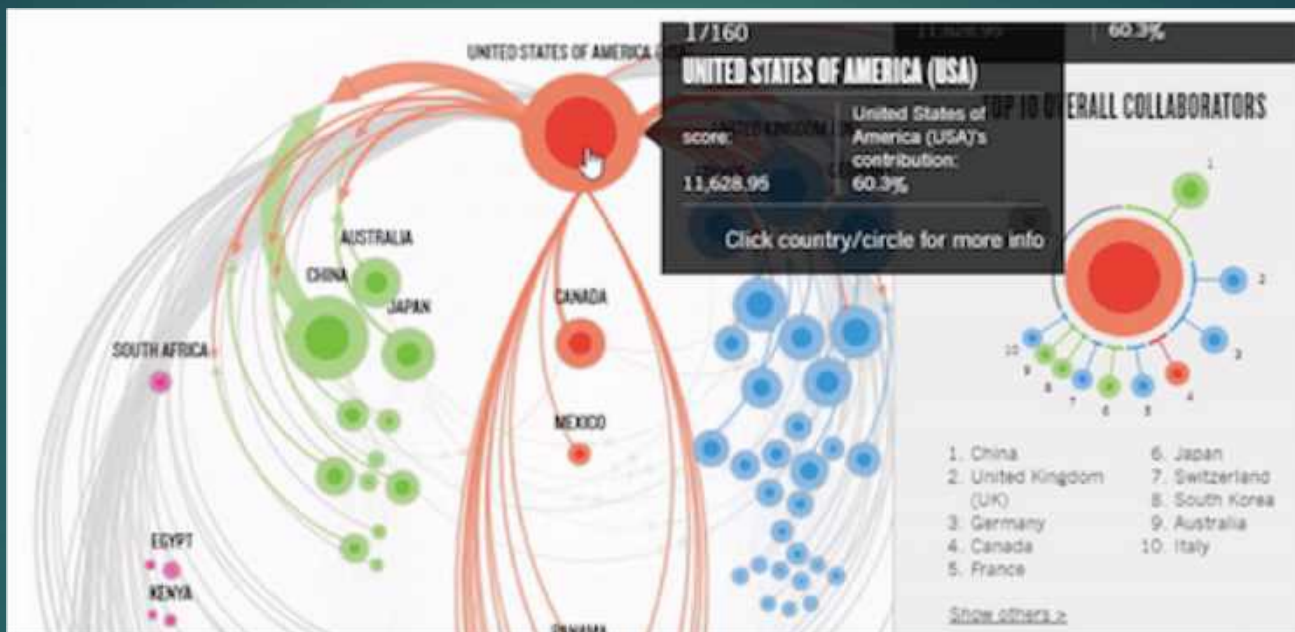
PROFESSOR, HOBART AND WILLIAM SMITH COLLEGES

GENEVA, USA

@ETINANWAR



The state of art of international research collaboration and the Indonesian ranking



<https://www.natureindex.com/news-blog/data-visualization-top-ten-countries-research-collaboration>

CONNECTED WORLD

Subject: **OVERALL** CHEMISTRY EARTH & ENVIRONMENTAL SCIENCES LIFE SCIENCES PHYSICAL SCIENCES

PATTERNS OF INTERNATIONAL COLLABORATION CAPTURED BY THE NATURE INDEX

This graphic shows only international collaboration
1 May 2019 to 29 April 2020

ALL REGIONS

ALL COL

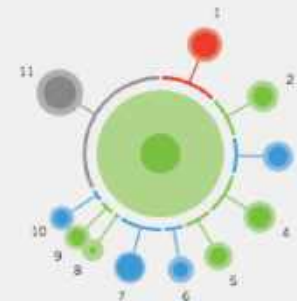
52/177

INDONESIA

Share:
33.79

Indonesia's contribution:
31.4%

TOP 10 OVERALL COLLABORATORS



1. United States of America (USA)
2. Australia
3. United Kingdom (UK)
4. Japan
5. Singapore
6. France
7. Germany
8. New Zealand
9. China
10. Switzerland

[Show others >](#)

INDONESIA'S NATURE INDEX PROFILE



169

NUMBER OF COLLABORATORS

<https://www.natureindex.com/country-outputs/collaboration-graph>

1 May 2019 - 30 April 2020

Subject/journal group: All

The table to the right includes counts of all research outputs for Indonesia published between 1 May 2019 - 30 April 2020 which are tracked by the Nature Index.

Hover over the donut graph to view the [FC](#) output for each subject. Below, the same research outputs are grouped by subject. Click on the subject to drill-down into a list of articles organized by journal, and then by title.

Note: Articles may be assigned to more than one subject area.

Count	Share
87	14.27

Outputs by subject (FC)




Subject	Count	Share
 Earth & Environmental Sciences	35	7.39
 Physical Sciences	30	4.17
 Life Sciences	31	3.47
 Chemistry	8	2.32

Top 10 institutions from Indonesia

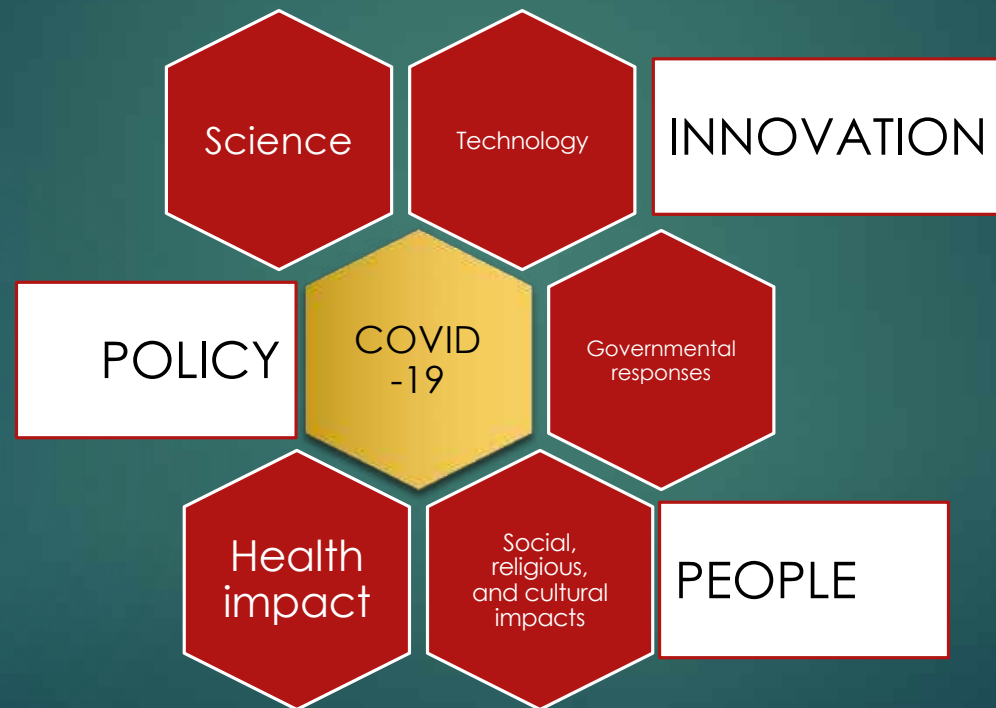
Institution	Count	Share
1. Bandung Institute of Technology (ITB)	17	2.81
2. Indonesian Institute of Sciences (LIPI)	31	2.06
3. Universitas Negeri Malang (UM)	2	1.06
4. Indonesian Agency for Meteorology, Climatology and Geophysics (BMKG)	7	0.90
5. University of Indonesia (UI)	6	0.88
6. Syiah Kuala University (Unsyiah)	4	0.88
7. Republic of Indonesia Ministry of Education and Culture	2	0.67
8. Indonesia Ministry of Energy and Mineral Resources of the Republic of Indonesia (ESDM)	3	0.40
9. Universitas Hasanuddin (UNHAS)	3	0.37
10. Parahyangan Catholic University (UNPAR)	1	0.33

<https://www.natureindex.com/country-outputs/Indonesia>



The potential
collaboration beyond
science and
technology

Global challenges and the call for a transdisciplinary approach



The challenges in integrating social sciences and humanities

- ▶ Linearity in discipline and educational background
- ▶ Different valuation assigned to science (STEM) and social-humanities fields
- ▶ In-university employment after graduation with less exposures to other collaborative practices
- ▶ Lack of supports and respects for the humanities and social studies' disciplines
- ▶ Low inbound student mobility (5,878 international degree students) (3)

Potential collaborators from Indonesian's side

Education and skills	female	male	value
STEMS, attainment %	12.39	29.39	0.42
Agril., Forestry, Fisheries & Veterinary, attainment %	3.37	5.13	0.66
Arts & Humanities, attainment %	5.26	5.21	1.01
Business, Admin. & Law, attainment %	18.09	18.64	0.97
Education, attainment %	28.38	17.60	1.81
Engineering, Manuf. & Construction, attainment %	3.34	14.29	0.23
Health & Welfare, attainment %	21.38	8.58	2.50
Information & Comm. Technologies, attainment %	4.88	13.05	0.37
Natural Sci., Mathematics & Statistics, attainment %	4.17	2.05	2.04
Services, attainment %	n/a	n/a	n/a
Social Sci., Journalism & Information, attainment %	11.14	15.45	0.72
Vocational training, attainment %	11.89	13.67	0.87
PhD graduates, attainment %	0.03	0.07	0.39

Opportunities for research collaboration with diaspora

Indonesian Faculties at U.S. Campuses

goo.gl/YCFsTI

Last Name	First Name	Institution	School or Subject	Website
	Sumarsam	Wesleyan University	Music	https://goo.gl/4kbxUl
	Harjito	Wesleyan University	Music	https://goo.gl/6EoH38
	Midiyanto	University California: Berkeley	Music	https://goo.gl/pv4r1q
	Christiadi	West Virginia University	Business and Economic Research	https://goo.gl/QYc0P6
	Taufik	California Polytechnic State University	Electric Power	https://goo.gl/YBywjP
Abdullah	Ira	Robert Morris University	Accounting and Taxation	https://goo.gl/K34EIL
Adhikarya	Ronny	East West Center	History	https://goo.gl/c58TB6
Ahmadin	Muhammad	Sullivan University	Economics	https://goo.gl/p1LndA
Alatas	Ismail Fajri	NYU Art and Science	Assistant Professor Middle Eastern and Islamic Studies	https://goo.gl/NCCkFQ
All	Muhamad	University California: Riverside	Religious Studies	https://goo.gl/mDolyM
Ambadar	Zara	Carlow University	Psychology	https://goo.gl/DDOwNr
Andaya	Leonard	University of Hawaii: Manoa	Department of History	https://goo.gl/0qUJfu
Angriawan	Arifin	Purdue University	Associate Professor of Strategic Management	https://goo.gl/qTwx4e
Anwar	Etin	Hobart William Smith Colleges	Religious Studies	https://goo.gl/P7K3LZ
Anwar	George	University of California, Berkeley	Lecturer	https://goo.gl/tb1jKt

Astari	Niken	Mercyhurst University	Faculty Instructor/Judiciary	https://goo.gl/WD02cy
Budiman	Jeff	Illinois Institute of Technology	Associate Professor Civil and Architectural Engineering Director of Geotechnical Engineering	https://goo.gl/LUP3xH
Byas	Trikartianingsih	City University of New York Queensborough Community College	English	https://goo.gl/00QQ1F
Chahyadi	Candra	Eastern Illinois University	Associate Professor of Finance	https://goo.gl/ZNuTQw
Datu Buyung	Agusdinata	Arizona State University	Senior Sustainability Scientist, Julie Ann Wrigley Global Institute of Sustainability Assistant Professor, School of Sustainability	https://goo.gl/WpQqYX
Dulimarta	Hans	Grand Valley State University	Computing and Information Systems	https://goo.gl/4boIM0
Gaduh	Arya	The Sam M. Walton College of Business, University of Arkansas, Fayetteville	Assistant Professor	https://goo.gl/aEGuh9
Ginting	Victor	University of Wyoming	Department of Mathematics	https://goo.gl/5w4apz
Gunawi	Haryadi	The University of Chicago	Computer Science	https://goo.gl/kblLE0
Handayani	Iin	Murray State University	Agronomy	https://goo.gl/0F9Fw
Hariadi	Rizal	Arizona State University	Assistant Professor, Biodesign Center for Molecular Design and Biomimetics	https://goo.gl/rF1WGW
Harjoto	Maretno Agus	Pepperdine University	Business and Management	https://goo.gl/hk5BSE
Harlim	John	The Pennsylvania State University	Associate Professor of Mathematics and Meteorology	https://goo.gl/sMjhzl
Heryudono	Aifa R.H.	University of Massachusetts Dartmouth	Associate Professor at Department of Mathematics	https://goo.gl/Z7Eo7n



Integrating humanities and
social sciences in
interdisciplinary research and
collaboration

Sites for interdisciplinary humanities

- ▶ Curricular goals (a transdisciplinary approach)
- ▶ Appreciation for artistic expression (art, architecture, urban planning, geography, Islamic studies)
- ▶ Scientific goals (STEM)
- ▶ The inclusion of cultural diversity (Humanity and social sciences, such as Anthropology, social sciences, religious studies, international relations, etc.)
- ▶ Ethical judgment (Education, Humanity and social sciences, such as Religious studies, philosophy, international relations)
- ▶ Bi-disciplinary (two disciplines: sains teknologi dan sosial humaniora)
- ▶ Transdisciplinary (two or more approaches)

My current research interest

- ▶ Muslims as a violent people- using a Foucault's archeological approach to examine the Western discursive narrative of Muslims as violent people;
- ▶ Islam and environment- examines the theological foundation for anthropocentric ideology and its impact on the making of climate injustice;
- ▶ Islam and material culture: examines the transmission of Western dress to Indonesia from 1900-1940s and its impact on the contemporary Islamic fashion

My passion:
Building a collaborative event using transdisciplinary
approach

ABOUT REDUCATES

OUR STORY

Reducates makes your online events and service more accessible and easier to manage. It meets your need for organizing lecture, workshop, stadium general, seminar, conference, and even family, fan, reunion, or community meetings. It also allows you to capitalize your skills for greater use and need.

REDUCATES WEBINAR EVENT
DIALOG INSPIRATIF SERI #18
BIOENERGI DAN TRANSPORTASI INTELIGEN:
KESEMPATAN DAN TANTANGAN DALAM ADAPTASI KEBIASAAN BARU

WISATAKARYA 1
Dr. Oki Purandari
Deputy Director of Research, Innovation, and
High Performance of Indonesia & Southeast Asia

WISATAKARYA 2
Prof. Rini Fitri Sari
Professor of Environmental Engineering
Department of Environmental Engineering
Faculty of Engineering, Institut Teknologi Sepuluh Nopember

WISATAKARYA 3
Dr. Endang Juwanti
Director of Research, Innovation, and
High Performance of Indonesia & Southeast Asia

MODERATOR
Prof. Elin Anwar
Associate Professor of Chemical Engineering, IC 200
The Center of Indonesia

MODERATOR
Dian Nugraha Herawati, Ph.D.
Ph.D. Candidate
In Public Administration and Administration
Faculty of Economics, University of Sebelas Maret, Indonesia

Format: Zoom Meeting
Link: Google Meet
Moderator: Youtube

Tanggal: September 13, 2020
Waktu: 18.30 - 21.30 WIB
Materi: 5 materi yang akan dibahas di webinar
Reducates.com/inspiredialog18

For more details, contact us: +62 812 5223 4852 | reducates.network@gmail.com

reducates.com | @reducates | @reducates | www.reducates.com

THE BENEFIT OF EVENT MANAGEMENT

BENCANA PANDEMI DAN PENDIDIKAN KESEHATAN MENTAL

ORGANIZER
 Dr. Dicky Puluprey
 Prof. Widi
 Dr. Tedy Pratiwi
 Prof. Edo Anwar
 Dr. Yuliani

Event: October 23, 2020
 Time: 18:30 - 21:30 WIB

BAYI BUATAN: SELEKSI GENETIK DALAM SAINS DAN AGAMA

SPEAKER
 Prof. Rudi Mirawati
 Dr. Jerald M. Gouw
 Prof. Anwaribrah
 Prof. Edo Anwar
 Syarifuddin Ad Alhamud

Event: October 24, 2020
 Time: 18:30 - 21:30 WIB

GENDER DAN SAINS: KESEMPATAN DAN TANTANGAN DI INDONESIA

PARTICIPANT
 Dr. Susila Prasna Putri
 Dr. Muhammad Raza
 Dr. Trias Setiawan
 Prof. Edo Anwar
 Yapan Sri Wahyuni, Ph.D.

Event: October 25, 2020
 Time: 18:30 - 21:30 WIB

ORGANIZER

Create, manage, and deliver an event to a success
 Get participants from Reducates' networking

SPEAKER

Create a profile, upload CV, share the event material, and get an e-certificate .

PARTICIPANT

Create a profile and a CV, book an event, download the event material, and get an certificate

Collaboration with I4-Humaniora

The logo consists of the text "IKATAN ILMUWAN INDONESIA INTERNASIONAL" in a bold, sans-serif font. The word "INDONESIA" is the central focus, with the letters "O", "N", and "E" rendered in red, while the other letters are black. The entire text is enclosed within a large, stylized red bracket that forms a partial frame on the left and right sides.

**IKATAN ILMUWAN
INDONESIA
INTERNASIONAL**

Collaboration with Hobart and Smith Colleges



Since 2001, Hobart and William Smith Colleges have moved 15 spots in the *U.S. News & World Report* rankings, this year coming in at number 61 in the "National Liberal Arts Colleges" category in its 2013 Best Colleges guidebook.

The logo for Forbes magazine, featuring the word "Forbes" in white serif font on a black rectangular background.

Hobart and William Smith Colleges were included in *Forbes* magazine's list of "The 50 Top ROI Colleges 2014: The Grateful Grads Index." The index uses the dollar amount of private donations to an institution per student over a 10-year period to measure a school's value. The index takes into account alum participation rates, or percentage of graduates who donate to their alma mater each year, as strong indicators of return on investment (ROI).



Princeton Review placed HWS among the country's best institutions for undergraduate education in its 2014 edition of its annual college guide, *The Best 378 Colleges*.

The logo for SmartMoney magazine, featuring the word "SmartMoney" in a red serif font, with "THE WALL STREET JOURNAL MAGAZINE" in smaller black letters below it.

SmartMoney has again recognized Hobart and William Smith as an exceptional investment in its ranking of "Colleges that Help Grads Get Top Salaries." The Colleges are ranked No. 43 among national public, private and Ivy League institutions, just 10 places behind Yale University.

Conclusion



- ▶ The culture of international research and collaboration as a product of curriculum and international exposures;
- ▶ The holistic curriculum leading into a transdisciplinary approach and interest to collaborate, research, and publish;
- ▶ Casting a wide net of collaboration to build interest among like minded individuals.

Reference

- ▶ 1. <https://www.natureindex.com/news-blog/data-visualization-top-ten-countries-research-collaboration>
- ▶ 2. <https://jakarta.tribunnews.com/2019/03/12/kemenristek-dikti-arahkan-kampus-sesuai-kebutuhan-industri-bukan-humaniora-dan-sosial>
- ▶ 3. <https://wenr.wes.org/2019/03/education-in-indonesia-2>
- ▶ 4. http://www3.weforum.org/docs/WEF_GGGR_2020.pdf